



Version 1

This is a template form and is not an approved form. You may complete the original of this form and submit with another approved form using **MyMinesOnline**.

Refer to the **Permit application** or any other Department guide for assistance. Please use a pen, and write neatly using **BLOCK LETTERS**. If insufficient space anywhere on this form, please attach a separate document.

This form is to provide assistance to determine the true locality of your application in MinesOnlineMaps.

Resource authorities that abut this application

eg NE corner abuts NW corner of MC5646 and SE corner abuts the SW corner of MC5646

W extent abuts E extent of ML 70383 and EPC 837
NW to NE extent abuts N extent of MDL 429
NW extent abuts S extent of MDL 519
SE to SW extent abuts NW to NE extent of ML 70528

Refer to Figure 1 for further information.

Land parcels that abut this application

eg western boundary abuts the eastern boundary of Lot 25 on RP143567

Western boundary abuts the eastern boundary of Lot 201 on SP321205
Northern boundary abuts the southern boundary of Lot 9 on CNS98
Southern boundary abuts continuation of Lake Vermont Extension MLA Lot 102 on SP310393

Refer to Figure 2 for further information.

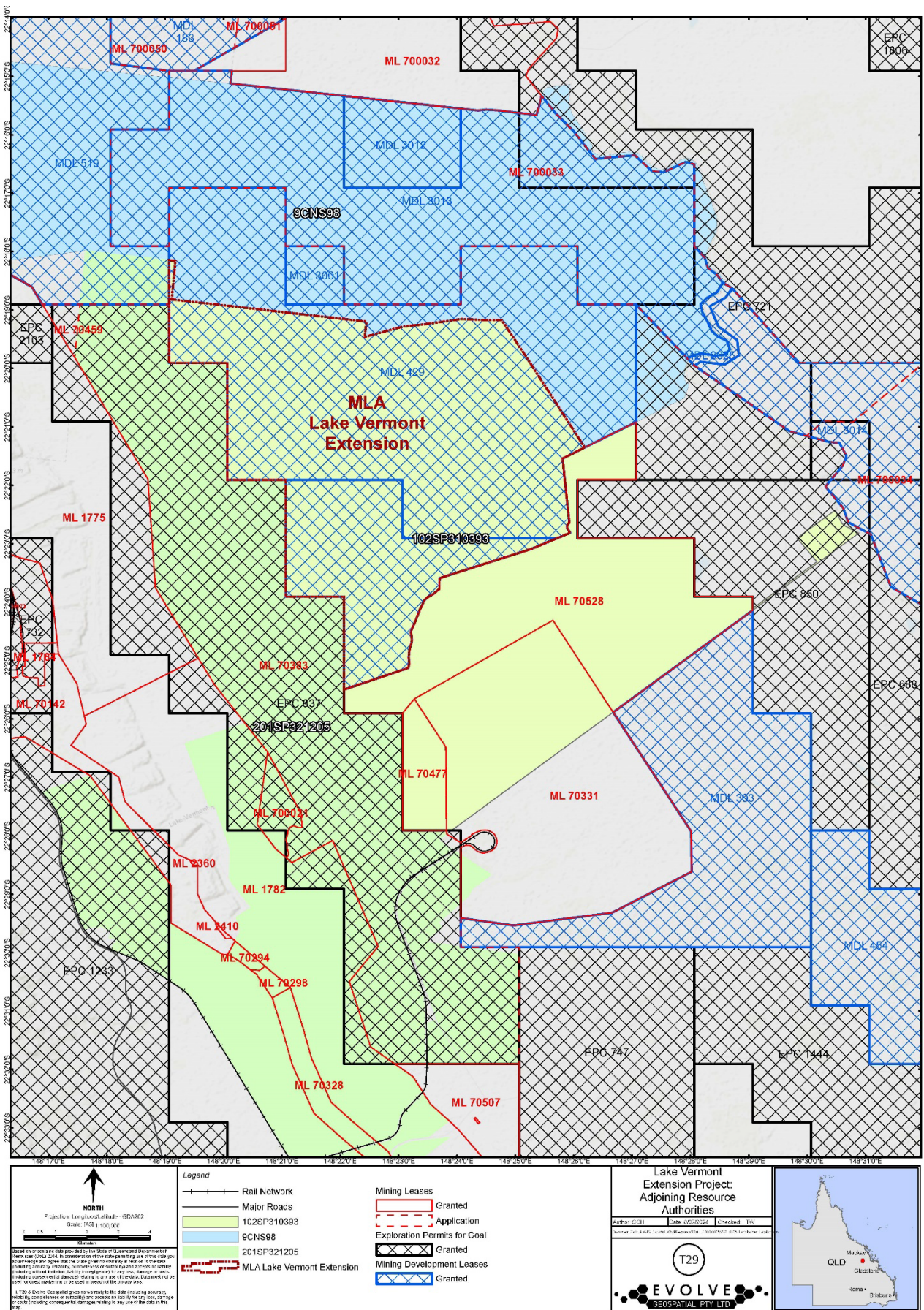


Figure 1. Lake Vermont Extension Project: Adjoining Resource Authorities

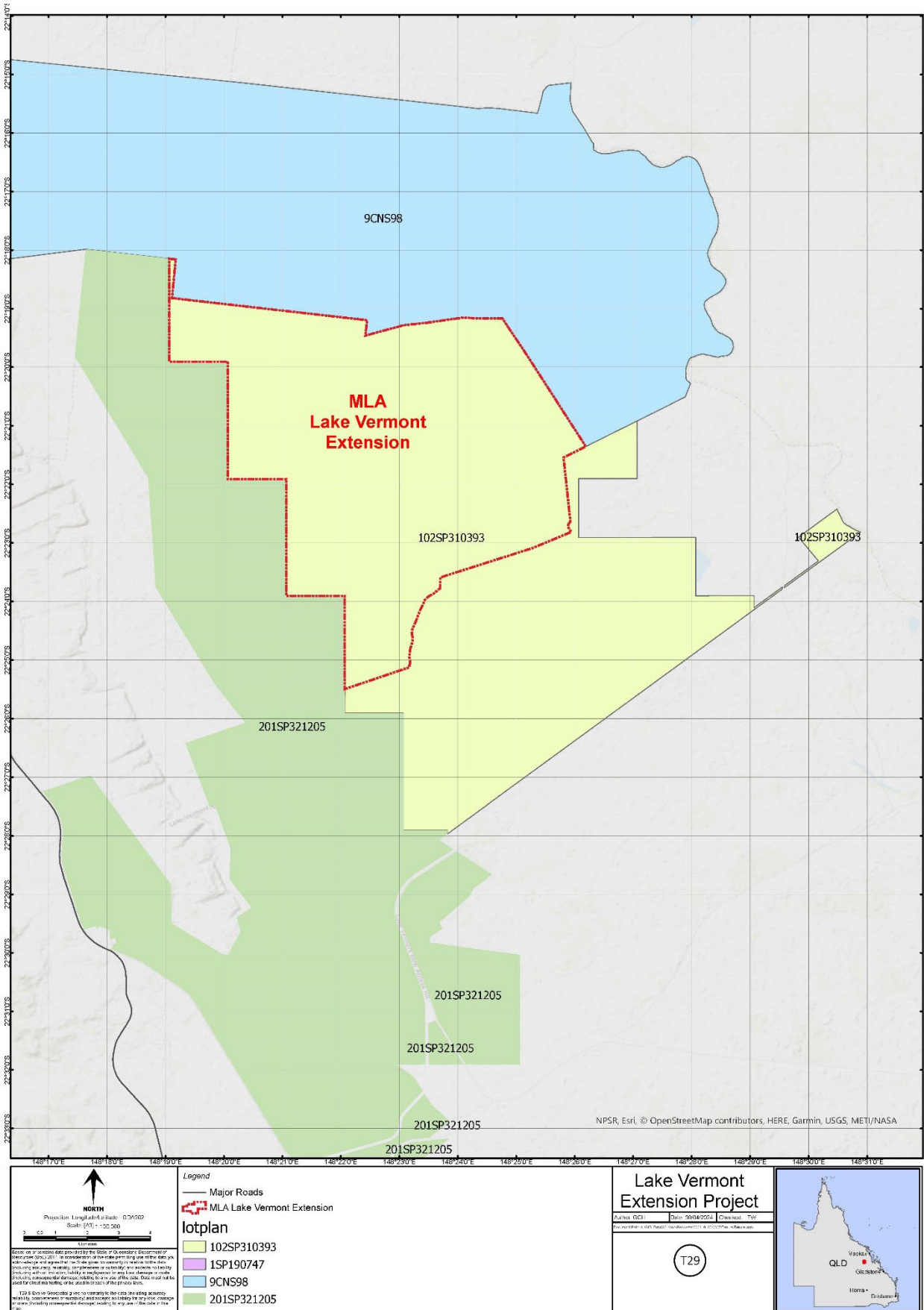


Figure 2. Lake Vermont Extension Project: Adjoining Land Parcels